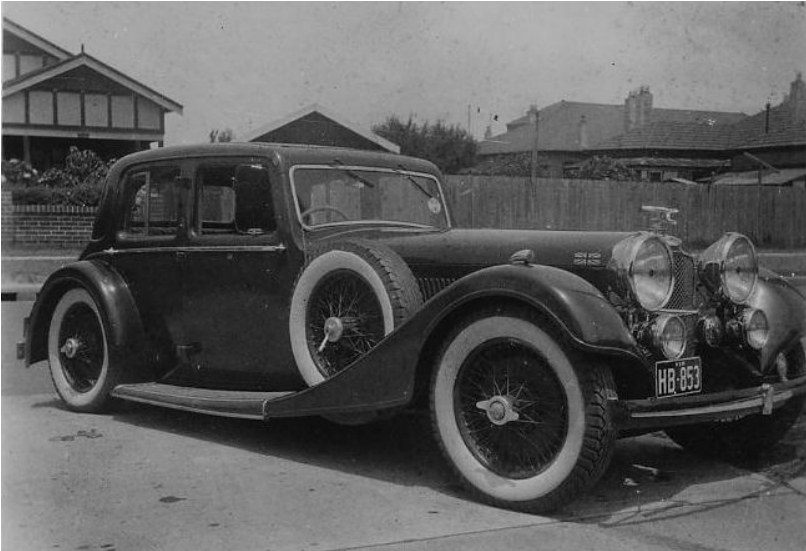
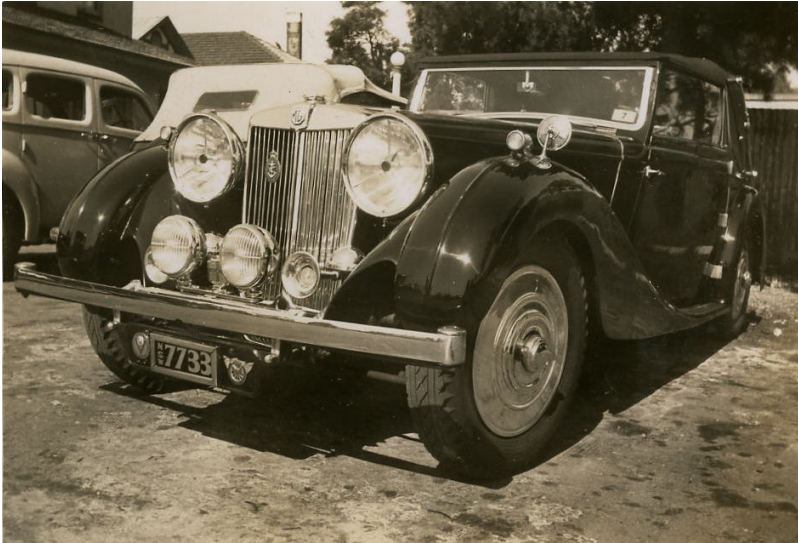


Despite our commitment to true vintage sports cars 'moderns' have figured prominently in the early days of the club. Our albums record the daily drivers of our members and many of these were put to good use in club event. Shown below is early



president Gordon Nichol's beautiful 1935 Alvis Speed 20 Charlesworth saloon taken in 1946 at Rose Bay. This six cylinder car of 2.7 litres was good for about 90 mph and few cars would have touched it in 1946. Many shots of the family by the car or sitting on it are recorded.

Keeping close company was Jack Jeffrey in his 1937 MGSA Tickford drophead, known affectionately as 'Jack's Gin Palace'. There seems to be a little more chrome on this example than normally found and the highly polished wheel covers adds much to the shine. Also a six cylinder of 2.3 litres, but despite the relatively small engine size these MG's were excellent



performers and also capable of around 90mph with a cruising speed of 70mph. These six cylinder saloon MGs were much valued and below is John Barraclough in his 1937 MGSA standard saloon. This photo was taken during the February 1947 one and a half day reliability trial which stopped at Lapstone Hotel overnight. Water crossings, some very deep,



were all part of the fun with many attacking this particular crossing with great speed causing good tidal waves.

Various VSCCA members have owned these MG saloons with Geoff and Robert coming to mind. Current member Harry of Canberra with a much developed MG SA with a drophead coupe body completed the Peking to Paris rally two years ago and is about to do it again in 2010 in another SA. It should be remembered that these cars were only nine years old when these photos were taken.

Finally there is this lovely 1934 pillarless M45 Lagonda owned by Mr Williams in Victoria. A 4.5 litre car these saloons were capable of 100mph and an obvious choice for vintage enthusiast who could afford them. In this 1946 photo that's the Blue Lake 30-98 Vauxhall behind.



This is the equivalent of us using cars made in around 2000.